

The Sewer Series

Help Us Keep Rainwater Out of the Sewer

Stay in the know! This poster is part of a series. Check back each month to learn more about Rosalia's wastewater system, and to get the answer to last month's trivia questions!

Joke What animals love to live in the sewer?

Trivia Treated wastewater discharges into Pine Creek during the winter months (December 1st through April 30th). To what water body is Pine Creek a tributary?

Answers from last month: TRIVIA: Q: On average, how many gallons of wastewater is produced by a single resident per day? A: 75-90 gallons per day. JOKE: Q: Why did the soldier flush the toilet? A: Because it was his duty.

What is Inflow and Infiltration?

Inflow and infiltration (I/I) is when excess water enters the sewer system. I/I can impact the facility's ability to properly treat the Town's wastewater before entering Pine Creek. Most I/I is caused by old or broken infrastructure that needs to be fixed or replaced, and commonly occurs during or after high rain or snow melt events.

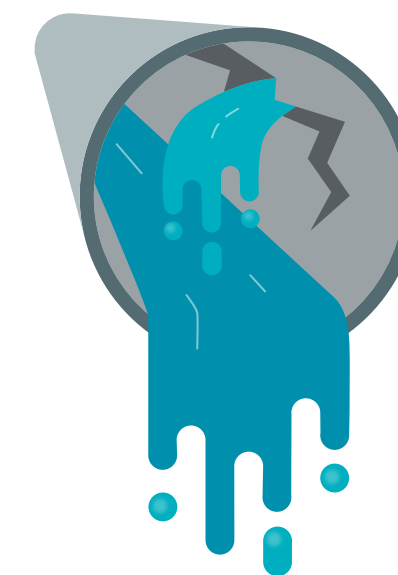
Inflow

Occurs from surface runoff that enters a sewer system through manhole covers, exposed broken pipes and defective pipe joints, cross connections between storm sewers, and illegal connection of roof leaders, cellar drains, yard drains, or catch basins.



Infiltration

Occurs when groundwater enters a sewer system through broken pipes, defective pipe joints or illegal connections of foundation drains.*



*EPA, Office of Municipal Pollution Control. (1985). I/I Analysis and Project Certification. Ecology Publication, 97(03).

How Homeowners Can Help

- Redirect your downspouts to flow into the ground, not over the sewer
- Have pipes inspected for cracks and tree root intrusions
- Ensure your sump pump has a proper discharge connection
- Make repairs to sewer lines on your property

Contact:

Eljay Sanders

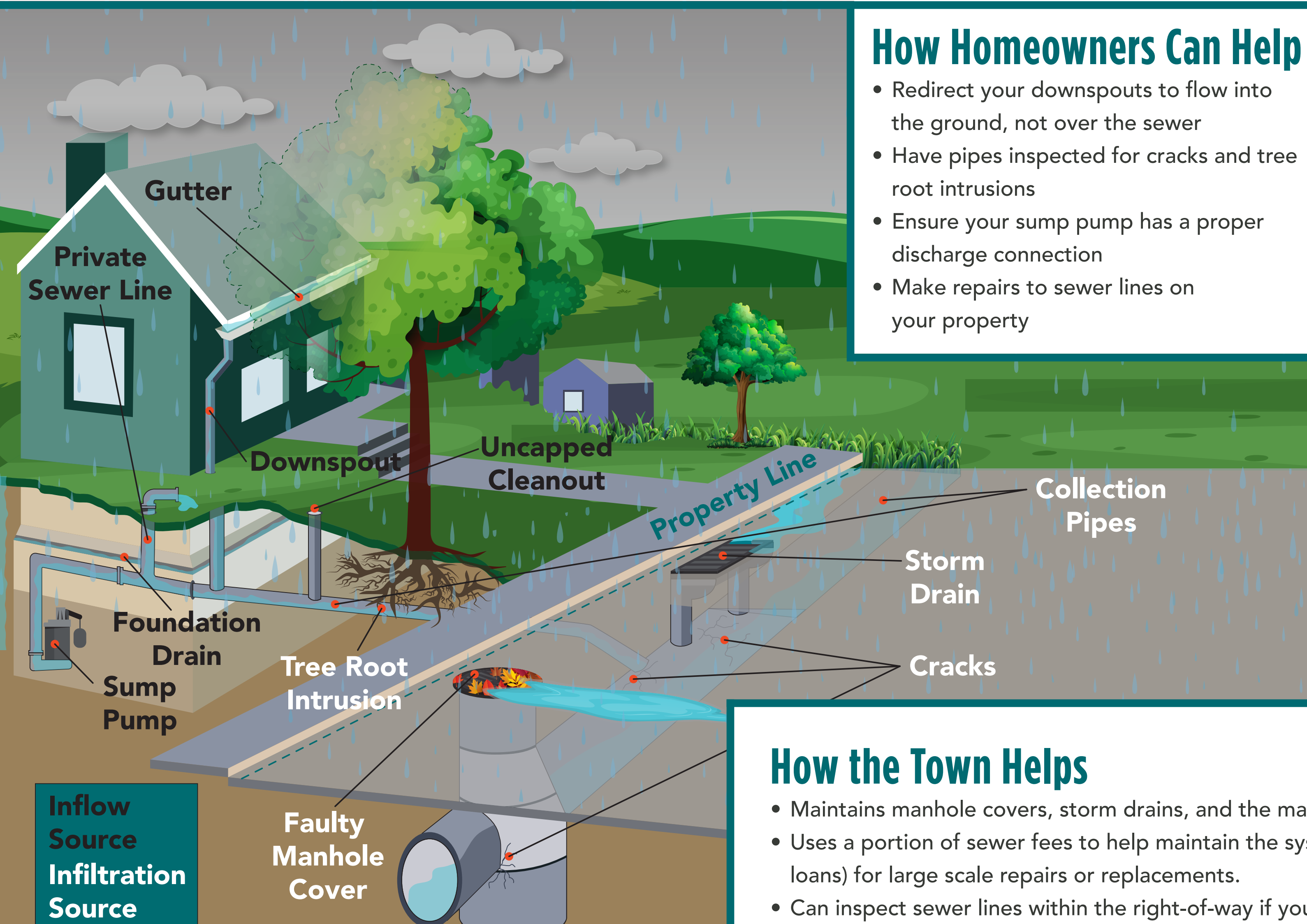
Town of Rosalia Public Works
maintenance@rosalitown.org, (509) 879-3150

Hannah Anderson

The Langdon Group
handerson@langdongroupinc.com, (208) 770-0500

Sam Mineer

J-U-B Engineers, Inc.
smineer@jub.com, (509) 458-3727



How the Town Helps

- Maintains manhole covers, storm drains, and the main sewer collection pipe.
- Uses a portion of sewer fees to help maintain the system and seeks additional funding (through grants/loans) for large scale repairs or replacements.
- Can inspect sewer lines within the right-of-way if you suspect there are blockages or broken pipes.