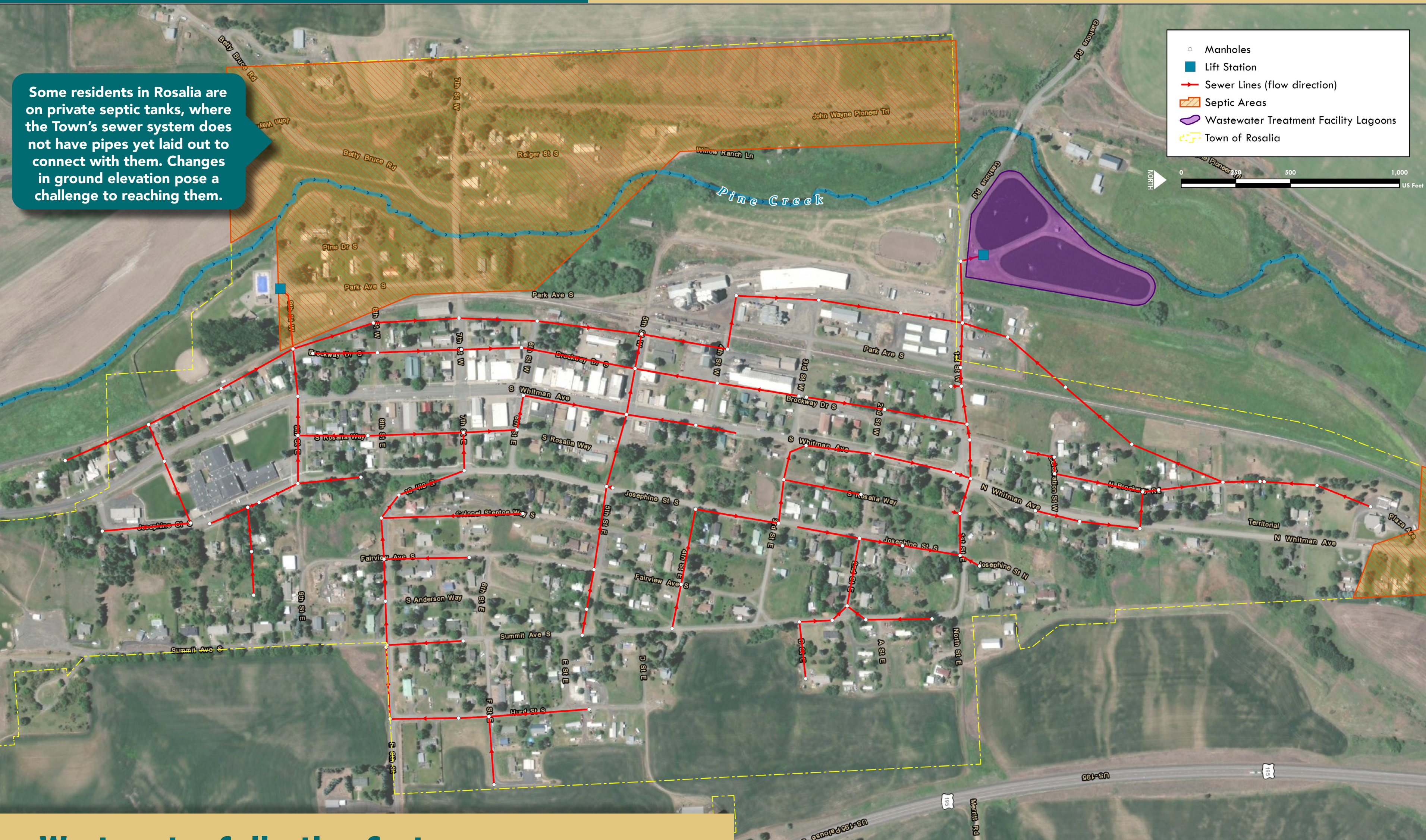


The Sewer Series

Overview of Rosalia's Collection System

The sewer collection system was originally constructed of brick manholes and clay tile pipe in the 1940's and 1950's. Flow was collected to a large septic tank until the 1960's when the lift station and two cell facultative lagoons were constructed. Over the years, different portions of the collection system have been updated by either cured-in-place-pipe, trenchless rehabilitation, or total replacement. Brick lined manholes were also replaced with precast concrete manholes. There are some portions of the system which are still clay tile pipe and brick lined manholes.

Some residents in Rosalia are on private septic tanks, where the Town's sewer system does not have pipes yet laid out to connect with them. Changes in ground elevation pose a challenge to reaching them.



Stay in the know!

This poster is part of a series. Check back each month to learn more about Rosalia's wastewater system, and to get the answer to last month's trivia questions!

Joke

Why don't bacteria gamble in Las Vegas?

Trivia

If you lined them all up, how many total miles would the pipes in Rosalia's sewer system be?

See below for answers from last month

What is the main type of organic or inorganic treatment used in Rosalia's lagoon system? Answer: Chlorination/Dechlorination

What do you call a sewer expert? Answer: A connoisseur.

Wastewater Collection System

This is a map of the Town of Rosalia's sewer collection system, which is made up of a series of gravity sewer pipes and manholes. Manhole covers are used to access the system for repair and maintenance. Two lift stations are used to move flow from a lower to a higher elevation.

*This map is based on available field data. If you have more updated information, please contact the Town or J-U-B Engineers.

Questions? Contact:

Eljay Sanders, Town of Rosalia Public Works • maintenance@rosaliatown.org • (509) 879-3150
 Hannah Anderson, Public Involvement Specialist • handerson@langdongroupinc.com • (208) 770-0500
 Sam Mineer, EIT, J-U-B Engineers, Inc. • smineer@jub.com • (509) 458-3727